

QUICK START GUIDE

LIFETONE HL™ BEDSIDE FIRE ALARM AND CLOCK MODEL HLAC150

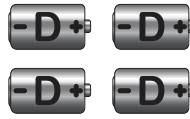
Thank you for purchasing the Lifetone HL™ Bedside Fire Alarm and Clock. These items are included:



HLAC150



Bed Shaker



4 D Cell Alkaline
Batteries



HLAC150 User's Manual

SETUP VIDEO



PLACE THE LIFETONE HL™ NEXT TO YOUR BED WITH THE SPEAKER FACING THE PILLOW.

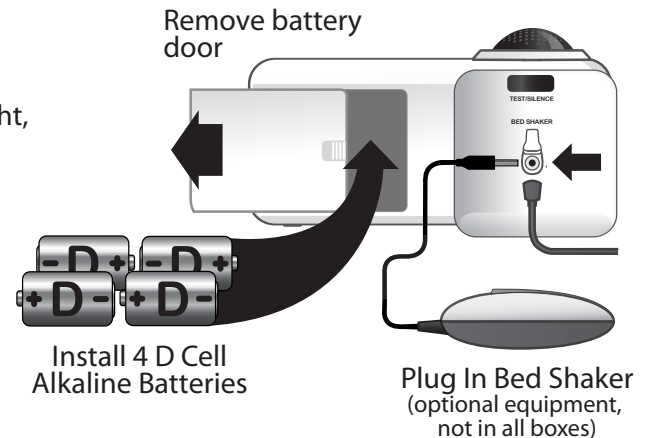
STEP 1 - POWERING THE HLAC150™

1. Remove the battery door located on the back of your clock.
2. Insert four D cell alkaline batteries, as shown in the illustration at right, matching the polarity (+ and -) signs in the open compartment.
3. Replace the battery door securely. A flashing "TEST" on the screen tells you the batteries are installed correctly.
4. Plug the Lifetone HLAC150™ into an electrical outlet near your bedside. Do not use an outlet controlled by a wall switch.
5. You may plug the bed shaker in on the back of the clock now, or at any time after it has been set up.

The word "TEST" will now be flashing on the screen. Go to STEP 2.

NOTE:

The batteries are for backup in the event of a power outage only. The HLAC150 is not meant to operate on batteries alone.



STEP 2 - SETUP WITH YOUR SMOKE DETECTOR

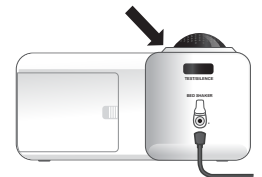
1. The word "TEST" is flashing on the screen. Press the red TEST/SILENCE button on the back of the clock. The word "TEST" will stop flashing for 30 to 50 seconds.
2. When "TEST" starts flashing again, locate the most distant smoke alarm you want detected. If you have interconnected alarms, use the nearest one.
3. Press and hold the test button on the smoke alarm until the Lifetone HL™ alarm sounds. Between 2 and 6 smoke alarm T3 cycles (groups of 3 beeps) will be required. This takes about 10 to 30 seconds.
4. When the Lifetone HL™ alarm sounds and "FIRE" appears on the screen, the test has been successful.
5. To stop the alarm, press the red TEST/SILENCE button on the back of the clock.
6. If all tests are passed, the "12 hr" time display option will flash on the screen, and you may now set the clock. Go to STEP 3. Important warning! If you have First Alert talking alarms, see section IV. OPERATING INSTRUCTIONS in the HLAC150 User's Manual.

NOTE: If the clock is flashing all segments as shown below and beeping at short intervals, your smoke alarm was not detected or is not compatible with the LIFETONE HL™.



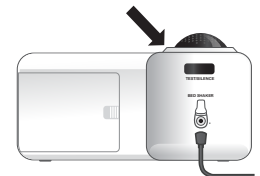
Unplug the clock and remove one battery. Repeat the setup beginning with STEP 1- POWERING THE PRODUCT. You may need to choose a closer smoke alarm. If the setup test fails again, the smoke alarm may not be compatible. Unplug the clock and remove the batteries. See the section titled "UNSUCCESSFUL SMOKE ALARM SETUP TEST" in the user's manual.

Press TEST/SILENCE button to start the test.



Smoke alarm has been detected.

Press TEST/SILENCE button to silence alarm.



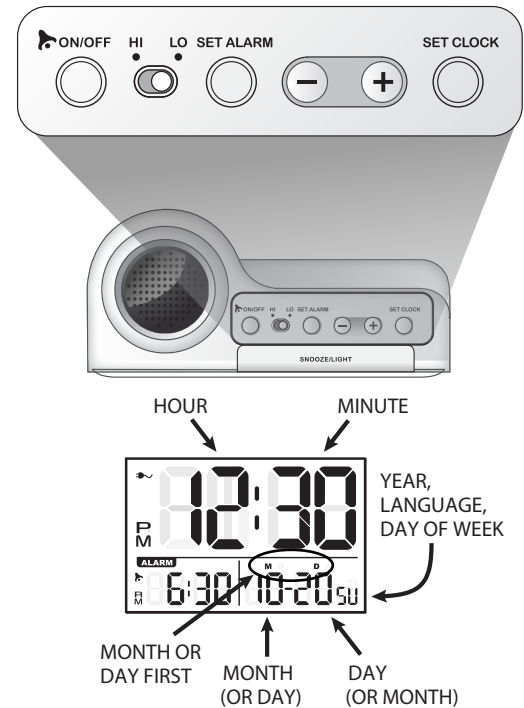
Successful test. You may now set the clock.

STEP 3 - SETTING THE CLOCK

1. On the time display, "12 hr" is flashing. To select 24 hour time, press + or - .
2. Press SET CLOCK. The hour will flash. To change the hour, press + or - .
3. Press SET CLOCK. The minute will flash. To change the minute, press + or - .
4. Press SET CLOCK. The year will flash. To change the year, press + or - .
5. Press SET CLOCK. The small "M" and "D" will flash. To change to a day-first display of the date, press + or - .
6. Press SET CLOCK. The month will flash. To change the month, press + or - .
7. Press SET CLOCK. The day will flash. To change the day, press + or - .
8. Press SET CLOCK. The "E" (for English) will flash. To change to Spanish or French, press + or - . Press SET CLOCK again.
9. The clock will show the day of the week to the right of the date. If you prefer to display the year instead, press SET CLOCK again.

NOTE: Any time that you need to reset the clock, press and hold SET CLOCK until the flashing "12 hr" appears, and repeat all parts of STEP 3.

Buttons on the top of the Lifetone HL™

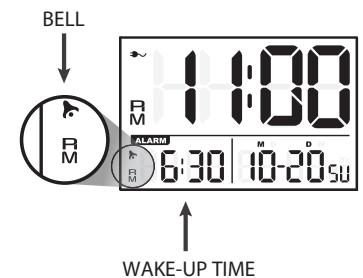


STEP 4 - SETTING THE WAKE-UP ALARM

1. If the wake-up hour is not flashing press SET ALARM until the hour starts flashing. Release SET ALARM. To set the hour, press + or - .
2. Press SET ALARM. The minute will flash. To set the minute, press + or - .
3. Press ON/OFF to enable or disable the wake-up alarm. The bell icon at lower left will appear or disappear to indicate whether the alarm is active or inactive.

You can adjust the volume of your wake-up alarm to high or low with the HI - LO slider on top. If there is a fire emergency the alarm will sound at maximum volume.

NOTE: Any time that you need to reset the wake-up alarm time, press and hold SET ALARM until the hour is flashing, and then repeat all parts of STEP 4.



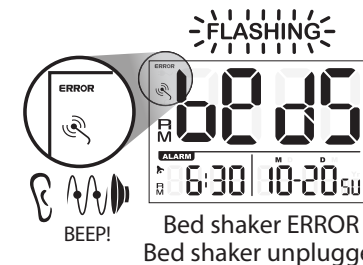
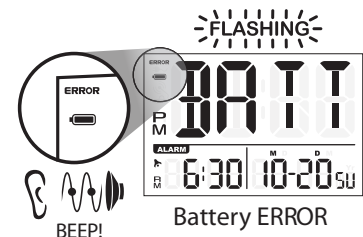
TROUBLESHOOTING ERROR MESSAGES

Batteries: If the clock is flashing "BATT" and beeping at one minute intervals, the batteries were not installed, were installed with the wrong polarity, or are below the required voltage. Remove and insert them again or replace them if necessary. Be sure to match the polarity (+ and -) signs in the battery compartment. To keep the setup with your smoke alarm, leave the clock plugged in while you change batteries.

Bed shaker: If the screen is flashing "beds" and the clock beeps, the bed shaker has come unplugged. Seat the bed shaker plug firmly into the jack on the back of the clock.

NOTE: If you decide you don't want to use the bed shaker after it has been installed, unplug the bed shaker. Then press the red TEST/SILENCE button on the back of the clock for 2 seconds and release it. That starts a manual self-test that will display "TEST" for 10 to 20 seconds, sound the fire alarm once, and "retrain" the clock to operate without a bed shaker.

NOTE: Any time that you want to restore use of the bed shaker, simply plug it in.



800 Research Parkway, Suite 339
Oklahoma City, OK 73104

PLEASE READ THE USER'S MANUAL COMPLETELY AND THOROUGHLY FOR FURTHER DIRECTIONS, PRODUCT FEATURES AND WARRANTY INFORMATION

For more information, go to www.lifetonesafety.com
or call Customer Service 1-800-648-7923

MODEL HLAC150

KEEP THIS QUICK-START GUIDE IN A SAFE PLACE

Doc# LTQSG150E130713